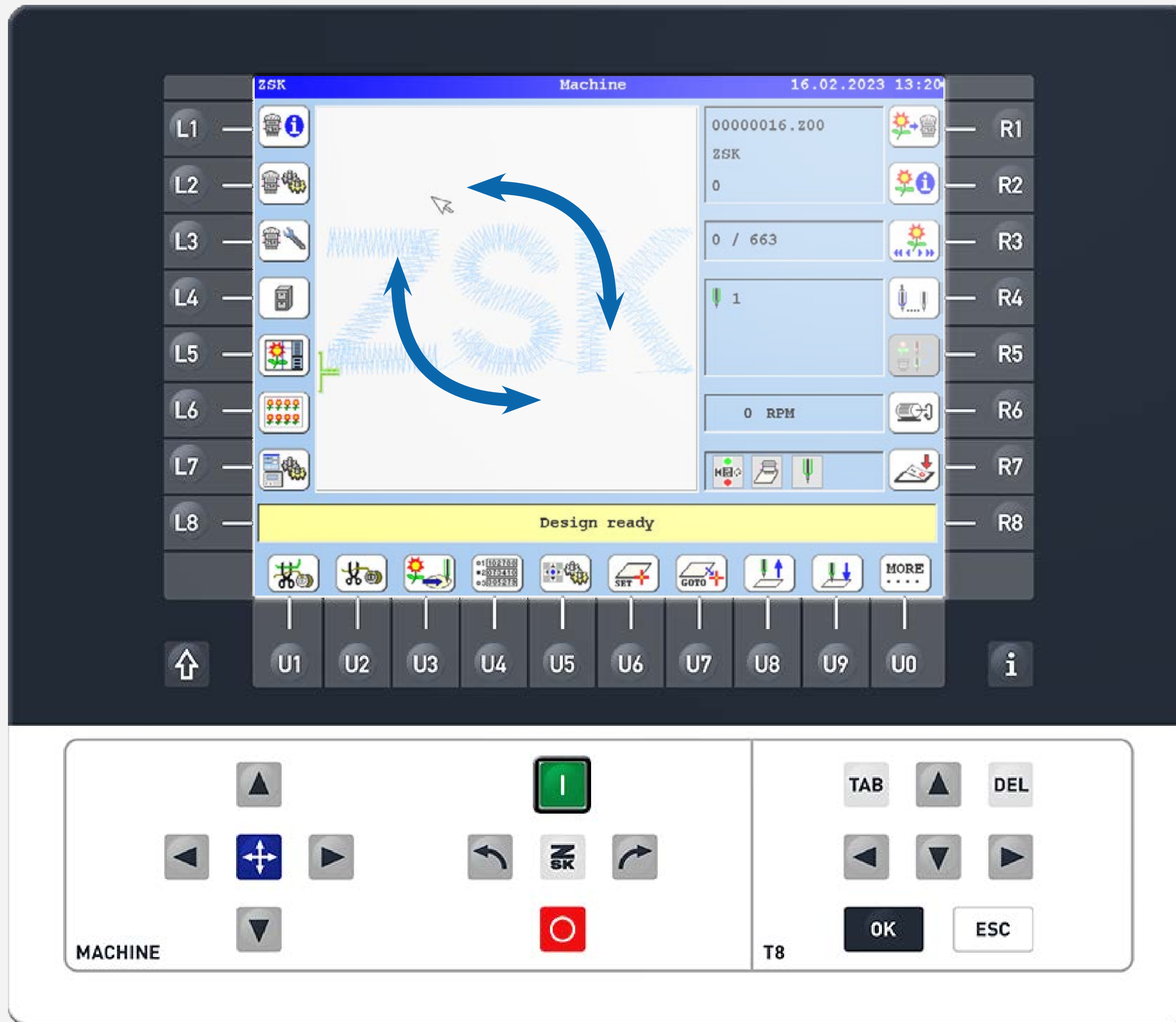




# ROTATE DESIGN

Did you know this T8 function yet?

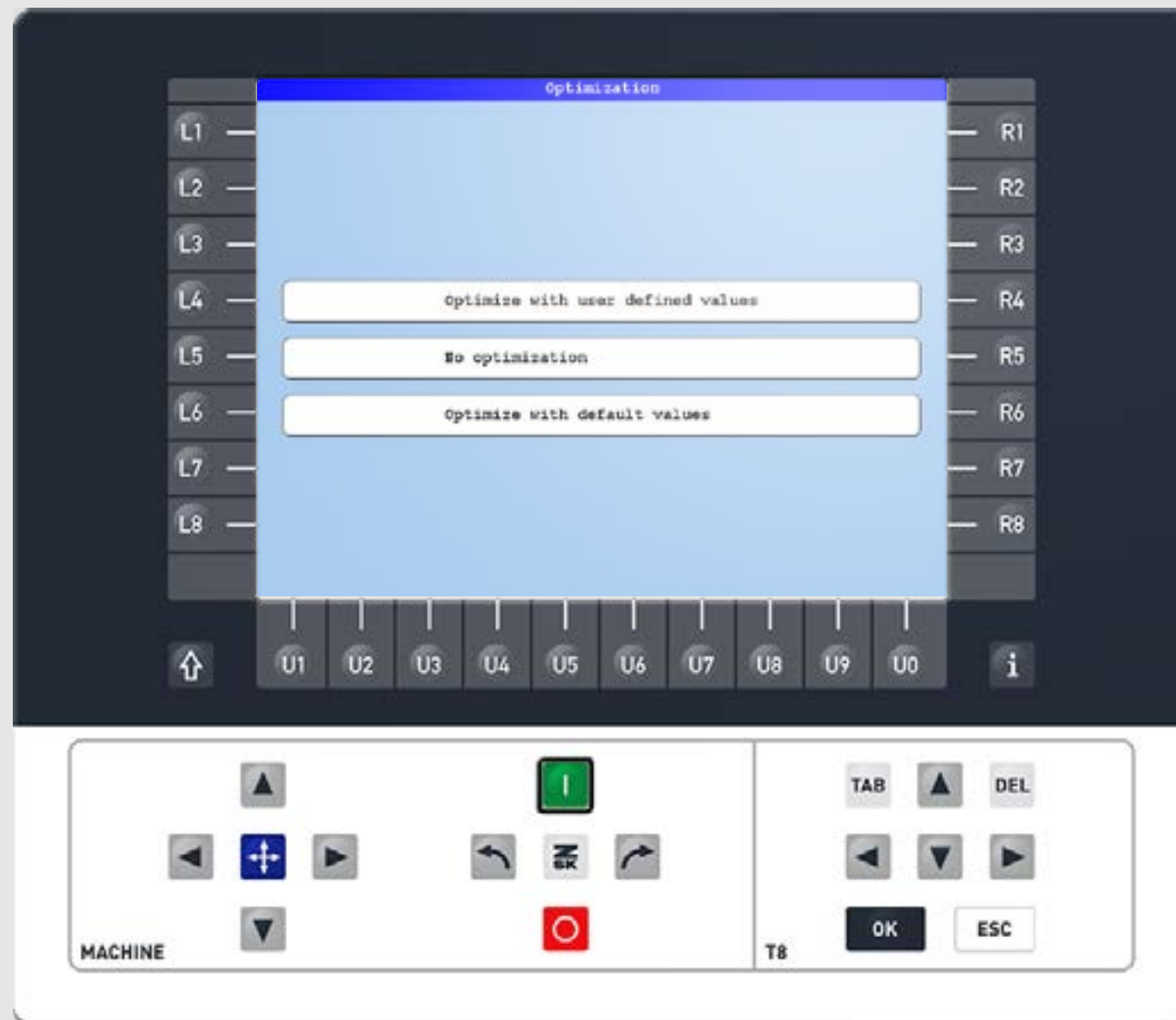


## What?

The embroidery pattern can be rotated both when loading it into the machine and afterwards.

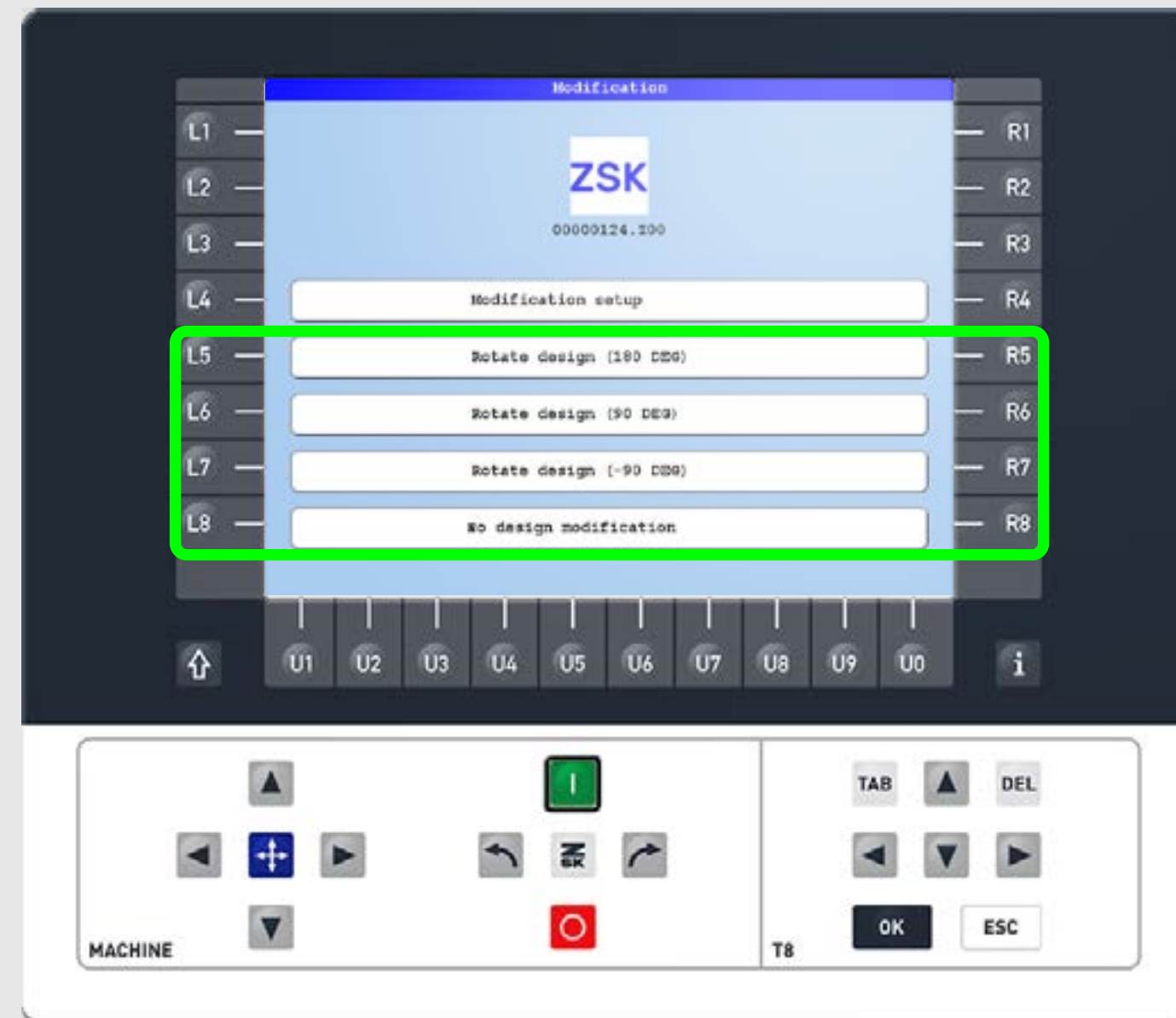
## Why?

The rotation of a design may be necessary, for example, when caps are to be embroidered.



### Step1 - Rotate a design while loading

While loading a new design from external memory the optimization inquiry pops up. *(Ensure inquiries are activated Vol.21)*  
Apply the optimizations as you typically would.



### Step2

Use the preview in the modification inquiry and select whether or not a rotation is needed and proceed by pressing the corresponding L or R function key. *(Ensure inquiries are activated Vol.21)*



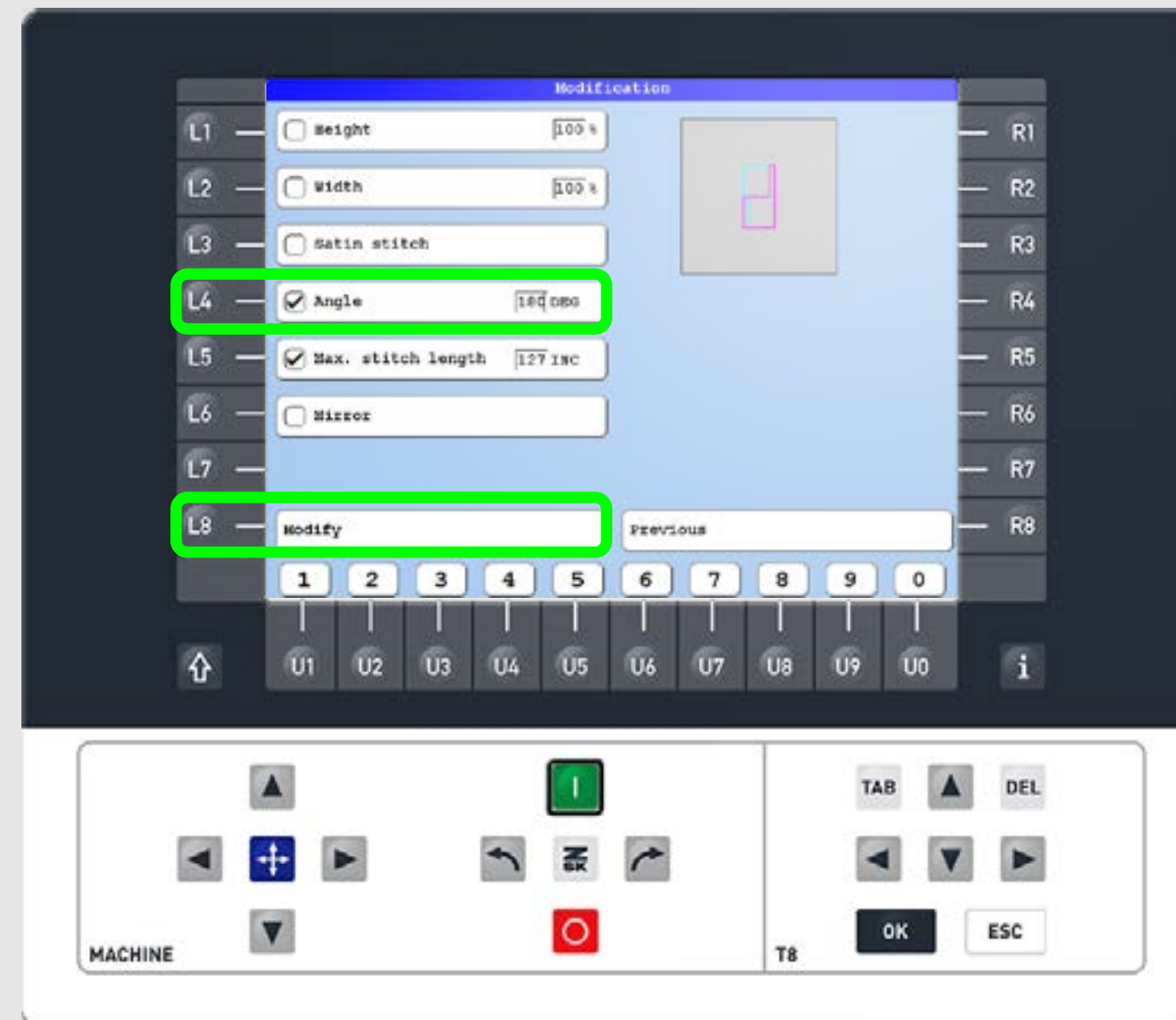
### Step3

Check if the design is now oriented correctly. Otherwise follow the instructions on how to rotate after loading the design.



### Step1 - Rotate a design after loading

To display the U-bar above, press R1 > U1 („more“) on the start screen.  
Press U1 to enter the modification tab.



### Step2

Check the checkbox L4 and enter the desired rotation angle using the U1-U0 function keys.  
Apply the settings by pressing L8 „Modify“.



### Step3

Check if the design is now oriented correctly.  
Otherwise repeat Step1 and Step2.



ZSK Stickmaschinen GmbH  
Magdeburger Str. 38-40  
47800 Krefeld, Germany

Fon: +49 (0) 2151 444 0  
Fax: +49 (0) 2151 444 170  
E-Mail: [zsk@zsk.de](mailto:zsk@zsk.de)