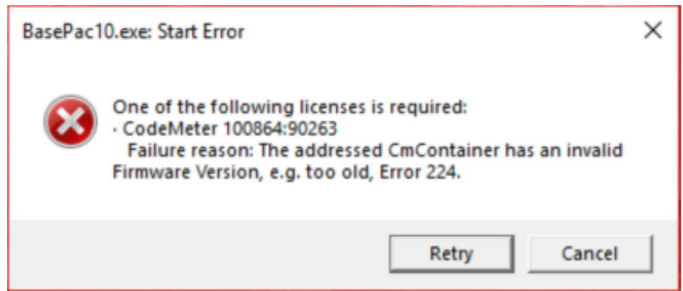


Firmware update CodeMeter

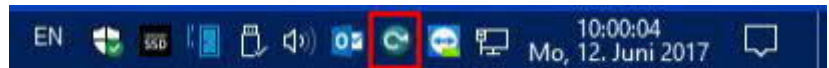


If you see the following error message on the screen after launching GiS BasePac 10, you must first update your CodeMeter to a newer firmware in order to use the GiS BasePac 10 program.

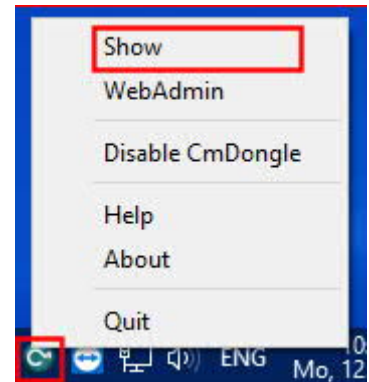


Updating the CodeMeter is done as follows:

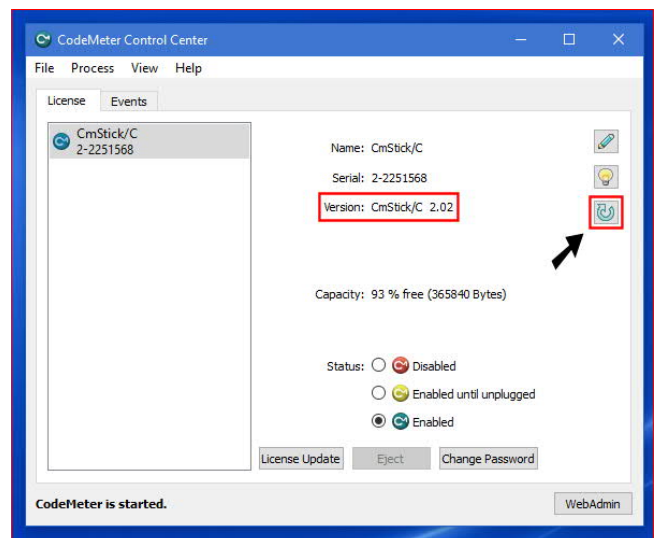
1. Right-click on the CodeMeter icon in the right corner of the taskbar.



2. Click on "Show" in the new dialog:



3. Then click on the icon with the arrow on the top right.



4. Then confirm that you want to do the update and wait for it to finish (this may take a few minutes).

Now you should be able to start the new GiS BasePac 10 without any problems.

